

WELCOME TO

2016:

HOME

A COLOR AND DESIGN TRENDS REPORT BY DUNN-EDWARDS





HOME, DEFINED AS A PLACE OF RESIDENCE OR REFUGE, AS WELL AS A PLACE OF CONNECTION, WHERE ONE IS MOST COMFORTABLE. WE CONTINUE TO RE-INVENT THE PAST, BREAK NEW FRONTIERS AND NORMS, INTERACT THROUGH NEW COMMUNICATIONS, CREATE A BALANCE BETWEEN HOME AND WORK, AND MAKE GRAND LIFE CHOICES.





HOME IS WHEREVER WE ARE, IT CONNECTS US TO OUR PAST,
PRESENT AND FUTURE. IT ALLOWS US TIME TO REFLECT, BOND WITH
OTHERS, CREATE NEW EXPERIENCES, ENJOY PLAYTIME AND PLAN
FOR OUR FUTURES — **WELCOME HOME.**



2016

2016 HOME displays five color and design trends providing insight to what's trending in 2016.



Blue Tapestry DET545	Purple Prose DET405	Night Night DE5937	Western Sunrise DET469	Pacific Blues DET586
S'mores DE6111	Smoke & Ash DET514	Chartreuse DEA123	Charcoal Briquette DET601	Mythical Blue DEC787
Red Clay DET447	Mountain Bluebird DET573	Midnight Sun DET580	Cherry Hill DE5069	Summer Solstice DET492
Peaches 'n' Cream DET451	Mayan Chocolate DET693	Rain Forest DE5684	Hazy Sky DE5912	Beachcombing DET494
Winter Morn DET617	Organic Matter DE5509	Pretty Petunia DE5989	Oasis DET546	Rosewood DEC706
Sonoma Chardonnay DET471	Alameda Ochre DET482	Indigo Night DEA138	Dreamy Blue DE5812	Eventide DET406
Lichen Green DET516	Arizona Tree Frog DET521	Lake Reflection DET556	Anchors Away DE5814	Harbor Mist Gray DET515
Rainsong DET541	Burning Tomato DEA111	Fiery Fuchsia DEA101	California Sagebrush DET513	Caramelized DET687
Daydreaming DET678	Santa Fe Sunset DET458	Fiery Coral DET426	Minimal Rose DE5015	Boat Anchor DE6377
Fallen Rock DE6389	Barn Red DET424	White Blossom DET677	Lightning Bug DE5465	Dolphin Tales DET600
Antique Mauve DE6395	Brooding Storm DET604	Heart Throb DET412	Champagne Bubbles DET669	Carrara DET649
Rose de Mai DET432	Stanford Stone DET696	Pueblo Rose DET438	Mint Smoothie DE5667	Morro Bay DET571

2016

2016 COLOR exudes confidence with strong, darker midtones mixed with milky pastels inspired by history and romance. Natural monochromatics pair with softened, reflective hues in retro influences, while farmstead-born, sundrenched and weathered coloring are reminders of the desert western landscape.



Blue Tapestry DET545	Purple Prose DET405	Night Night DE5937	Western Sunrise DET469	Pacific Blues DET586
S'mores DE6111	Smoke & Ash DET514	Chartreuse DEA123	Charcoal Briquette DET601	Mythical Blue DEC787
Red Clay DET447	Mountain Bluebird DET573	Midnight Sun DET580	Cherry Hill DE5069	Summer Solstice DET492
Peaches 'n' Cream DET451	Mayan Chocolate DET693	Rain Forest DE5684	Hazy Sky DE5912	Beachcombing DET494
Winter Morn DET617	Organic Matter DE5509	Pretty Petunia DE5989	Oasis DET546	Rosewood DEC706
Sonoma Chardonnay DET471	Alameda Ochre DET482	Indigo Night DEA138	Dreamy Blue DE5812	Eventide DET406
Lichen Green DET516	Arizona Tree Frog DET521	Lake Reflection DET556	Anchors Away DE5814	Harbor Mist Gray DET515
Rainsong DET541	Burning Tomato DEA111	Fiery Fuchsia DEA101	California Sagebrush DET513	Caramelized DET687
Daydreaming DET678	Santa Fe Sunset DET458	Fiery Coral DET426	Minimal Rose DE5015	Boat Anchor DE6377
Fallen Rock DE6389	Barn Red DET424	White Blossom DET677	Lightning Bug DE5465	Dolphin Tales DET600
Antique Mauve DE6395	Brooding Storm DET604	Heart Throb DET412	Champagne Bubbles DET669	Carrara DET649
Rose de Mai DET432	Stanford Stone DET696	Pueblo Rose DET438	Mint Smoothie DE5667	Morro Bay DET571

2016

And, globetrotting spicy colors interplay with neon brights in decadent atmospheres, while a wealth of blues provide a base for clean, spare design.



Blue Tapestry DET545

S'mores DE6111

Red Clay DET447

Peaches 'n' Cream DET451

Winter Morn DET617

Sonoma Chardonnay DET471

Lichen Green DET516

Rainsong DET541

Daydreaming DET678

Fallen Rock DE6389

Antique Mauve DE6395

Rose de Mai DET432

Purple Prose DET405

Smoke & Ash DET514

Mountain Bluebird DET573

Mayan Chocolate DET693

Organic Matter DE5509

Alameda Ochre DET482

Arizona Tree Frog DET521

Burning Tomato DEA111

Santa Fe Sunset DET458

Barn Red DET424

Brooding Storm DET604

Stanford Stone DET696

Night Night DE5937

Chartreuse DEA123

Midnight Sun DET580

Rain Forest DE5684

Pretty Petunia DE5989

Indigo Night DEA138

Lake Reflection DET556

Fiery Fuchsia DEA101

Fiery Coral DET426

White Blossom DET677

Heart Throb DET412

Pueblo Rose DET438

Western Sunrise DET469

Charcoal Briquette DET601

Cherry Hill DE5069

Hazy Sky DE5912

Oasis DET546

Dreamy Blue DE5812

Anchors Away DE5814

California Sagebrush DET513

Minimal Rose DE5015

Lightning Bug DE5465

Champagne Bubbles DET669

Mint Smoothie DE5667

Pacific Blues DET586

Mythical Blue DEC787

Summer Solstice DET492

Beachcombing DET494

Rosewood DEC706

Eventide DET406

Harbor Mist Gray DET515

Caramelized DET687

Boat Anchor DE6377

Dolphin Tales DET600

Carrara DET649

Morro Bay DET571

2012

2012 COLOR was rooted in change, uncertainty and adventure, together with the familiar and natural. A return to romance in design, contrasted by otherworldly technological achievements. Saturated hues offered decadence in design, while neutrals showcased restrained luxury.



Strawberry Jam DE5076	Cashew Nut DE5261	Peruvian Lily DE5004	Merlot DE5055
BBQ DE5118	Root Beer Float DE5326	Rosy Cheeks DE5062	Iron Ore DE5153
Fortune Cookie DE5355	Pasta DE5331	Strawberry Shortcake DE5081	Hot Sun DE5349
Caribou Herd DE5361	Antique Heather DE5975	Orange Marmalade DE5222	Teal Tune DE5831
Tropical Moss DE5486	Plumville DE6012	Wheat Bread DE5360	Bread Pudding DE6159
Fern Gully DE5692	Cloudy Gray DE6036	Envious Pastel DE5576	Stargazing DE6336
China Clay DE5802	Thick Fog DE6058	Snow Pea DE5634	Boat Anchor DE6377
Navy Teal DE5832	Cuban Cigar DE6154	Spearmint DE5729	Wine Stain DEA145
Ocean Night DE5901	Stone Creek DE6278	Mediterranean Sea DE5830	Red Ink DEA151
Victorian Violet DE6005	Crestline DE6325	Twilight Twinkle DE5907	Camouflage DEA172
Garnet Evening DEA147	Cover of Night DE6329	Tan Whirl DE6086	Roman Brick DEC713
Weathered Brown DEC756	Drifting DEC770	Treasure Chest DE6224	Sea Glass DEC775

2013

2013 COLOR had a focus on the familiar, based in the essence of nature, yet it diverged bravely and boldly into spirited hues. Key colors included a range of saturated mid-tone hues that provided a backdrop to fundamental neutrals, while bold colors enlivened and inspired new design directions.



Walrus DE6368	Maple View DE6152	Heartfelt DE5059	Tanami Desert DE5445
Spice Cake DE5251	Stone Craft DE6292	Charcoal Smudge DE6370	Pouring Copper DE5144
Flickering Gold DE6166	Watson Lake DE5766	Calm Waters DEW373	Milk Glass DEW358
Ball of String DE6190	Romantic DEW302	Irish Beauty DE5685	Dangerous Robot DE6387
Red Power DEA108	Poetic Yellow DE5393	Egyptian Sand DE6207	Cherry Bomb DEA105
Stone Silver DE5773	Spacious Sky DE5919	Bright Mango DE5195	Pacific Palisade DE5787
Iron Fixture DE6384	Apple Valley DE5088	Cupid's Arrow DE5061	Ivy Enchantment DE5571
Red Revival DEA154	Garden Pebble DE6247	Parakeet DE5580	Deep Coral DE5173
Violet Shadow DEA192	Blank Canvas DE5294	Water Baby DE5780	Trail Dust DE6123
Valley of Fire DE5167	Pastoral DE5575	Golden Glitter DE5410	Poodle Skirt DE5080
Ripe Pear DE5515	Peaceful Peach DE5176	Carnival Night DE5755	Clay Dust DE5373
Vegetation DE5676	Cottage White DEW318	Arabian Red DEA155	Sweetie Pie DE6003

2014

2014 COLOR had a focus on Earth coloring — from mineral elements, calcified tones, fossilization, smokey, frozen, otherworldly warm and textural to the watery blues of the ocean and skies and the synthetic bright coloring of the high-tech jungle. It was inspired by math, science and technology, as well as man's impact on the Earth.



Cookie Dough DE5435	Cultured Rose DE5123	Fuchsia Blush DE5025	La Terra DE5172
Woven Reed DE5527	Spanish Peanut DE5180	Pink Punch DE5048	Golden History DE5433
Periwinkle DE5906	Lion's Mane DE5319	Papaya Whip DE5164	Shark DE5771
Mannequin DE6043	Tortilla DE5436	Sweet Potato DE5201	Rolling Waves DE5716
Wild West DE6055	Playful Plum DE6018	Summer Sun DE5405	Reef Encounter DE5733
Sand Dollar DE6171	Western Red DE6090	Jungle DE5677	Bonnie Blue DE5807
Mist Spirit DE6302	Cedar Chest DE6112	Silver Storm DE5822	Pool Party DE5837
Chocolate Pudding DE6390	Whole Wheat DE6124	Red Power DEA108	The Blues DE5859
Mink DE6392	Pebble Walk DE6277	Nautical DEA139	Chill in the Air DE5911
Abalone DEW398	Black Bean DE6385	Passionate Plum DEA144	Pencil Lead DE5922
Slopes DEC721	Coy DEW300	Spiced Berry DEA149	Sandpit DE6118
Steveareno Beige DEC766	Garnet Evening DEA147	Black Bay DEA188	White DEW380

2015

2015 COLOR focused on rich, oil-paint canvas colors and deep, jewel tones reminiscent of old masters paintings to pastel-influenced postwar hues, providing a backdrop to 1950s-influenced design. And, bright pops of color weaved story lines of global travel and the best of science and technology.



Fairytale Dream DE5113	Cinnabar DE5209	Sangria DE5041	Amour DE5104	Bubblegum DE5072
Crossroads DE5359	Coyote DE5249	Geranium Red DE5089	Peach Fuzz DE5142	Spring Marsh DE5487
Spring Fields DE5619	Underbrush DE5446	Nectarine DE5166	Golden Retriever DE5318	Winter Escape DE5750
Slate Wall DE5797	Lakeville DE5872	Yuma Gold DE5305	Palm Leaf DE5508	Lunar Eclipse DE5776
London Fog DE5920	Cobblestone Path DE6068	Spinach Dip DE5611	Leaf Bud DE5514	Ice Cold DE5784
Dark Chocolate DE6014	New Cork DE6180	Royal Palm DE5726	Springtime Dew DE5553	Summer Lake DE5838
Antique Garnet DE6027	English Forest DE6280	Champion Blue DE5915	Dragon Bay DE5725	Luna Pier DE5888
Wood Lake DE6075	Lace Veil DE6372	Bamboo Screen DE6193	Madder Blue DE5926	Dive In DE5895
Hayride DE6102	Red Icon DEA104	Striking Red DEA103	Muted Berry DE5977	Jubilee DE5971
Granite DE6283	Wild Mustang DEA161	Orange Jewel DEA115	Lavender Sweater DE5998	Geyser DE6037
Velvet Clover DE6293	Iron River DEA176	Spring Juniper DEA128	Pinch of Pearl DEW320	Moss Covered DE6265
Ashen Plum DE6396	Rosewood DEC706	Cool December DEW383	Dark Ruby DE6028	Haze Blue DE6311



TO THE MANOR BORN



BACK AT THE RANCH



MIDNIGHT AT BAR
DO COPA



SUMMER CAMP



AN ISLAND TO MYSELF

TO THE MANOR BORN



TO THE MANOR BORN



Inspired by the age of Romance with a twist on the fairytale. Romanticism highlighted intense emotion, placing emphasis on sentiments such as apprehension, horror and terror and awe — especially the experiences when confronting the beauty of nature and sublimity. Romantics celebrated life filled with deep feeling, free expression and revived medievalism.



TO THE MANOR BORN

A bit darker, fantastical, strangely surreal and macabre, the manor shows a love of nature, romance and a deep sense of history. Taking cues from floral and organic designs, 19th-Century naturism, museums and a nod to Shakespeare among the familiar classics.



TO THE MANOR BORN

As an homage to the originator of the phrase “To the manner born” in the play *Hamlet*, by William Shakespeare — as well as the later 19th-century turn of phrase “To the manor born” — this trend is the next chapter to 2015’s Romance and Remembrance.

In 2015, we looked to journeys and a mix of multiple design influences with keys to medieval inspirations. In 2016 we look closer to home, still with an eye to romance and introspection.

To the Romantic, the Questioning, the Intropective... welcome to the Manor.



WHAT WE FOUND...

NOTABLE EVENTS, PEOPLE AND TRENDS

- Acclaimed photographer Lady Clementina Maude, Viscountess Hawarden, 1822-1865
- Julia Margaret Cameron, friend to Lady Clementina, also an acclaimed photographer
- Fascination with the new British royals – Prince William, Duchess Kate & children keeps focus on historical royal bloodlines



WHAT WE FOUND...

FASHION

- Precious, classic, opulent and melodramatic with a touch of Victoriana or Gothic

NOTES FROM THE RUNWAYS

- Florals everywhere from spring flower prints to floral lace embroidery for drama
- Textiles in subtle luxury to opulent, matte to gloss
- Colors range from neutrals with pink, mauve or lavender cast, to powder pinks, to ebony and cocoa

FASHION F/W 15-16 HIGHLIGHTS

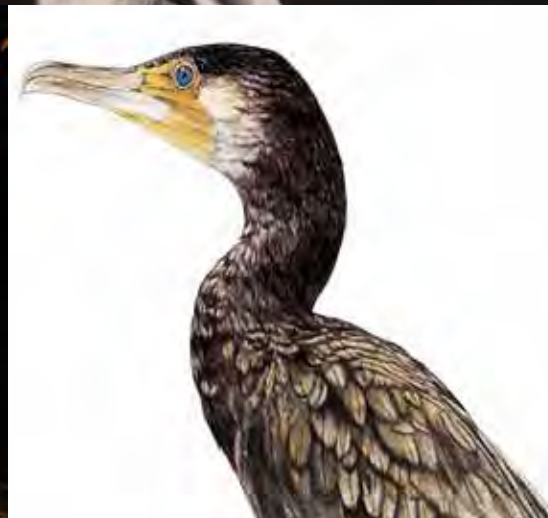
- Valentino, Alexander McQueen, Dolce & Gabbana, Roberto Cavalli, Fendi, MSG, Dries Van Noten



WHAT WE FOUND...

ARTS & ENTERTAINMENT

- Australian surrealist artist Heidi Yardley focuses on mythical themes with her latest work titled 'Sleepwalker' (shown right) in her series 'Meeting the Shadow'
- Swiss Institute of Technology, Lausanne – art installation of engraved motifs on concrete blocks by Italian Studio Truly Design
- Artist Stéphane Margolis
- Edgar Allen Poe – critically-acclaimed U.K. show coming to Broadway based on the life and death of Edgar Allen Poe called *Nevermore – The Imaginary Life and Mysterious Death of Edgar Allan Poe*
- John James Audubon – New York Historical Society: *Audubon's Aviary – The Final Flight, Part 3 of The Complete Flock exhibition*
- Painter Giovanni Boldini and Madame de Florian's abandoned apartment



Top left image: 'Sleepwalker'. 2015. *Meeting the Shadow*. Heidi Yardley. Photo ©Heidi Yardley.

WHAT WE FOUND...

TELEVISION & MOVIES

- *The Sound of Music*: 50th anniversary in 2015
- Julian Fellowes, creator of *Downton Abbey*, creating new drama based on the Gilded Age in New York, set in the late 19th-Century

2015 – 2016 RELEASES

- *Pride and Prejudice and Zombies*
- *The Huntsman*
- *MacBeth*
- *Alice in Wonderland: Through the Looking Glass*
- *Crimson Peak*
- *Dr. Strange*
- *Mr. Holmes*
- *Far from the Madding Crowd*
- *Pan*
- *Madame Bovary*
- *Suffragette*
- *Effie Gray*



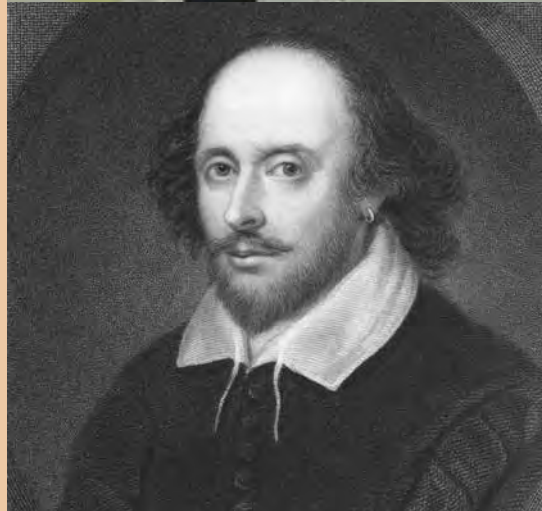
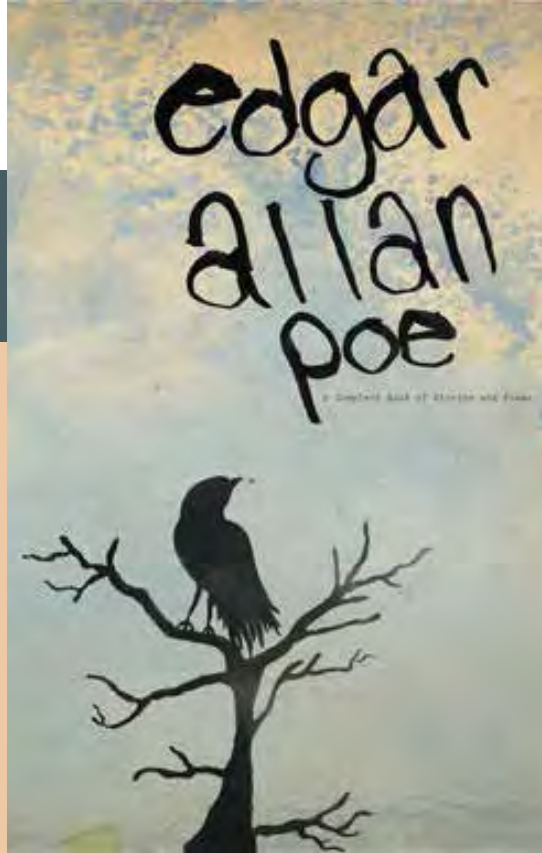
WHAT WE FOUND...

ESSENTIAL READING

- *Wuthering Heights* by Emily Brontë
- *The Theater of Nature or Curiosity Filled the Cabinet* by Angela Lorenz
- *My Life at Grey Gardens: 13 Months and Beyond* by Lois Wright
- Any book by Edgar Allan Poe

THEATER

- Shakespeare's 400th anniversary of his death – April 23, 2016
- *Into the Woods* – Broadway opening 2015, celebrated movie opened Dec 2014
- *Finding Neverland* – Broadway opening 2015, based on the Oscar-winning movie
- *Doctor Zhivago* – Broadway opening 2015, based on Boris Pasternak's 1957 novel



WHAT WE FOUND...

ARCHITECTURE & DESIGN

- Historic homes and buildings with Victorian, Colonial or Gothic architectural influences
- Highclere Castle, location of *Downton Abbey*
- Nostalgic New Orleans architecture
- The Lovecraft Bar – Portland, Utah
- H.R. Giger Bar – Chur, Switzerland
- Drygate Artisanal Brewery – Glasgow, Scotland surrealist artwork



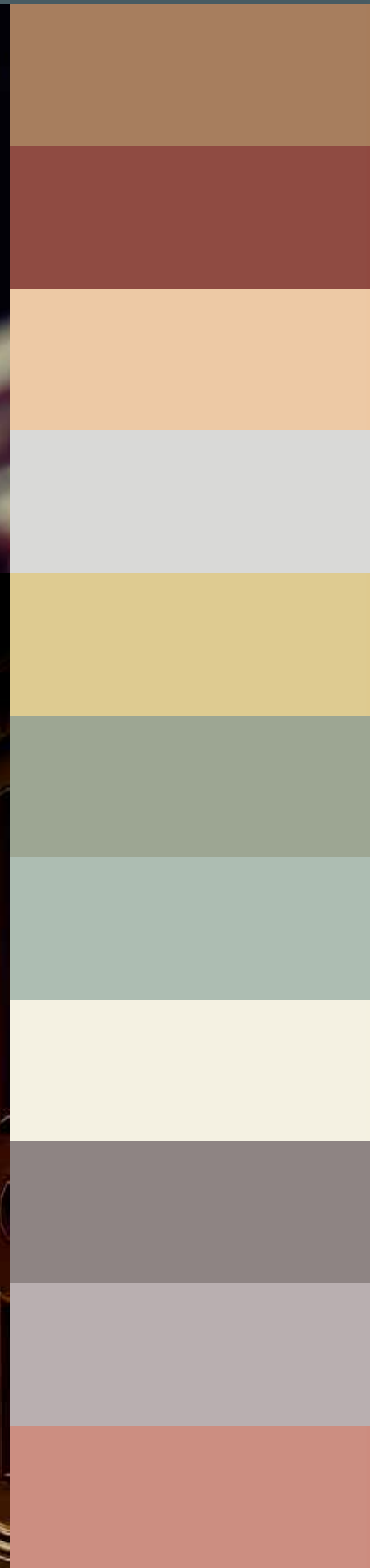
DESIGN RATIONALE

For those seeking a sense of grandeur with history and a touch of mystery.

The artist atelier filled with fine and decorative arts.

The workshop that evolves over generations, filled with emotional connections through drawings, photography, fashion and other visual arts.

Personal style and creative experimentation result in highly individualized designs.



DESIGN CHECK LIST

- Delicate, dark and melancholic, layered with opulence and luxury, a renewed idea of castle lifestyle
- Sophisticated with an influence of the naturalist explorers of the 19th-century, including animal engravings, travel trunks, glass globes, fossils, curiosity cabinets, taxidermy and entomological collections
- Subtle, yet elaborate, creating an atmosphere of fairytale romance with snow crystal effects, water drop shapes, delicate engravings, snow globes



DESIGN CHECK LIST

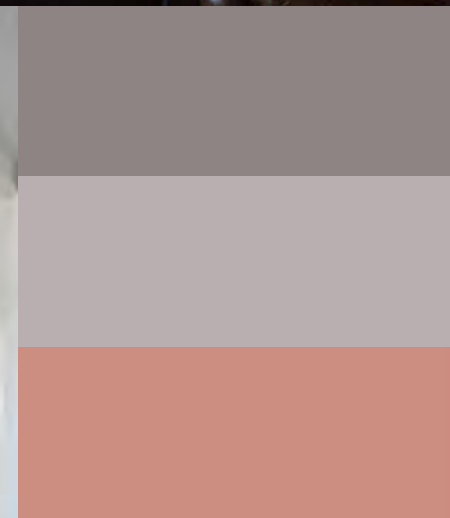
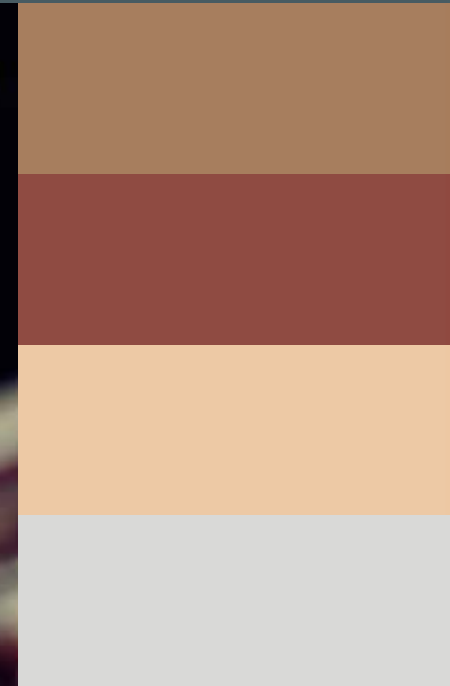
- Watercolor mixed with charcoal sketches and sepia
- Elaborate floral fantasies, detailed engravings and dark flowers inspired by William Morris
- Organic folds, decorative coral and sea urchin, feathered figures and swans
- Cloistered gardens resplendent with shrines and expansive vistas



DESIGN CHECK LIST

PATTERNS

- Gypsy rose, poppy fields, laser cuts, fleur de lis, luxe, foxes
- Blend of classic decoration with English and Swedish retro design, plus a pop of exotic
- Artistically torn, strange and random organic shapes inspired by nature such as lichen and mushrooms
- Fossilized surfaces and zoological panels, shell boxes, coral and sea urchin
- Embossed patterns, intricate interweaving, crochet and lace
- Frosty, sophisticated ink stain patterns
- Marbled patterns to speckled mineral finishes



DESIGN CHECK LIST

MATERIALS

- Hazy and translucent paired over heavier velvets and silks to create layers for added drama and luxury
- Pearlescent finishes, new on old designs, rich heritage
- Mineral crystals and silver mixed with ceramics
- Waxed surfaces
- Extravagant, one-of-a-kind pieces
- Marbled woods, laminates
- Wall coverings that look like frescos



Blue Tapestry DET545

TO THE MANOR BORN

S'mores DE6111

Red Clay DET447

Peaches 'n' Cream DET451

Winter Morn DET617

Sonoma Chardonnay DET471

Lichen Green DET516

Rainsong DET541

Daydreaming DET678

Fallen Rock DE6389

Antique Mauve DE6395

Rose de Mai DET432

COLOR PALETTE

To the Manor Born reflects a precious softness, with hushed neutrals paired with darker and midtone shades, giving a chiaroscuro effect.

Color is atmospheric, misted, elegant and organic. Shadow and light effects reflect the mysterious quality of the palette.



Blue Tapestry DET545

TO THE MANOR BORN

S'mores DET6111

Red Clay DET447

Peaches 'n' Cream DET451

Winter Morn DET617

COLOR PALETTE

Hues range from natural monochromatics to toned-multicolors.

Palette highlights include clay, mauve, ambrosia, purple fog, rouge, fig, rosewood, and silver reflection on fleshy pinks.

Sonoma Chardonnay DET471

Lichen Green DET516

Rainsong DET541

Daydreaming DET678

Fallen Rock DE6389

Antique Mauve DE6395

Rose de Mai DET432





BACK AT THE RANCH





BACK AT THE RANCH



Inspired by the wild and primitive, the authentic and simple. A need to recharge through seclusion, hard work, or adventure. The early Western ranches symbolized freedom to create one's own destiny; much-needed food sources; and the rise of the legends of iconic American cowboys, Mexican vaquero and charro and the South American gauchos, llanero and huasos.





BACK AT THE RANCH

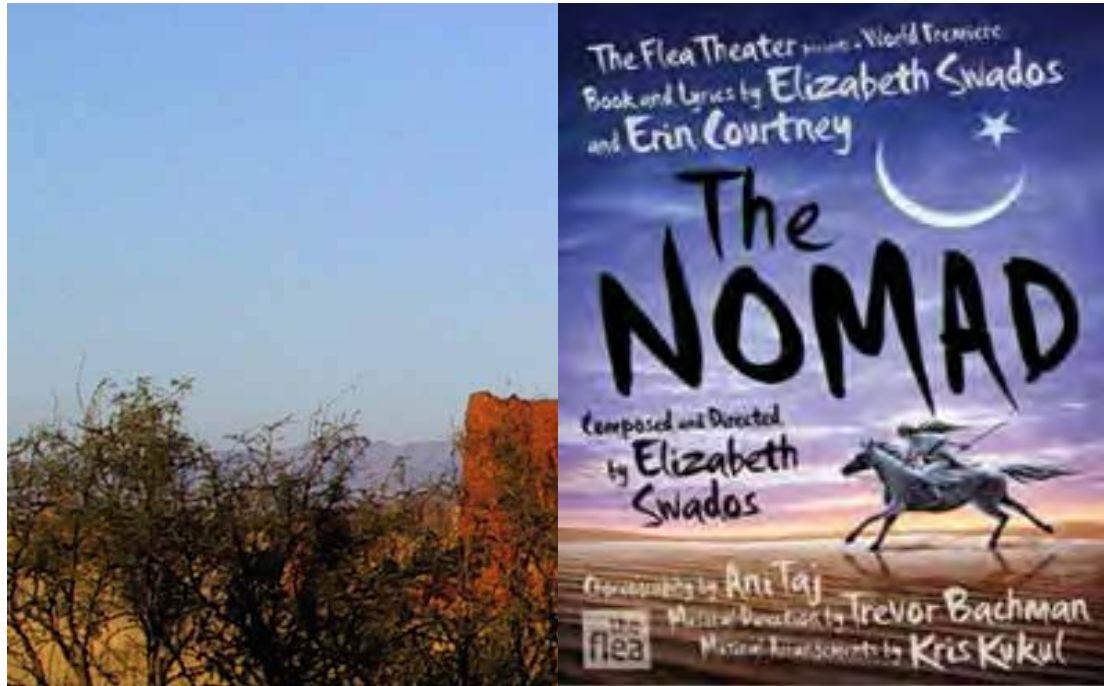
The next chapter to 2015's Spirit of the West takes the journeys made in 2015 and creating a home base filled with memories. Design and architecture alludes to the industrial with a touch of salvage steampunk as well as the atmosphere of the wild saloon, the men's barbershop and tattoo parlor. To the folkhero, the anti-hero and the wild and free... see you back at the Ranch.



WHAT WE FOUND...

NOTABLE EVENTS, PEOPLE AND TRENDS

- Pacific Standard Time: LA/LA. As a follow up to Pacific Standard Time: Art in L.A. 1945-1980, this new collaboration from The Getty Foundation aims to take a fresh look at vital and vibrant traditions in Latino and Latin American art through 46 exhibitions and events from San Diego to Santa Barbara opening in September 2017
- Planned completion of the Panama Canal expansion project; Fall 2014 marked the centennial opening of the original Panama Canal
- Laura Ingalls Wilder – author of *Little House on the Prairie*, 148th birthday
- Tiny house movement
- Craft beer industry trending from hobby to business



WHAT WE FOUND...

MOVIES & TELEVISION

2015 – 2016 RELEASES

- *Queen of the Desert*
- *Tomorrowland*
- *Hunger Games: Mockingjay Part 2*
- *Bourne 5*
- *Slow West*
- *Mad Max: Fury Road*
- *The Revenant*
- *Divergent: Allegiant Part 1*
- *Star Wars: The Force Awakens*
- *Salvage Dogs*
- *Building Alaska*

THEATER

- *Paint Your Wagon*
- *The Nomad* – Off-Broadway production of the life of Isabelle Eberhardt, a Swiss writer and romantic who died at the age of 27 in Algiers in 1904

WHAT WE FOUND...

FASHION

- '70s Revival meets gypsy bohemia

NOTES FROM THE RUNWAYS

- Colors range from henna reds to golden and mustard tones and evolving browns and oranges, chocolate to russet, ginger to marigold; metallic versions carry these hues forward
- Fabrics in varying shades of gold, mosaic patterns that are the new checks, broken and irregular blocks of color
- Neoclassic shapes and patterns reinvented, ponchos seen everywhere

FASHION F/W 15-16 HIGHLIGHTS

- Bally, Costume National, Burberry, Paul Smith, Givenchy, Hermes, Yohji Yamamoto, Tommy Hilfiger, Nanette Lepore





WHAT WE FOUND...

ARCHITECTURE & DESIGN

- Abandoned churches as restaurants/ hotels – Hameau des Lodge, Domaine Sainte Colombe, France
- Alux Caverna Restaurant, Bar and Lounge – Quintana Roo, Mexico
- Baobab Tree Bar – Limpopo Province, South Africa
- Bar at Palacio del Sal – Uyuni, Bolivia
- Sorrel River Ranch – Moab, Utah
- Triple Creek Ranch – Montana Rockies
- Blue Bottle Café, Los Angeles, CA – example the of industrial and minimal
- Hotel Santa Teresa – Rio de Janeiro
- Francis Ford Coppolla's new winery in Sonoma, CA. Design theme based on the pioneering spirit of the American West and the original American Indian tribes inhabiting North America.

Top: Alux Caverna Restaurant; middle: Blue Bottle Café; bottom left: Bar at Palacio del Sal; bottom right: Baobab Tree Bar.



WHAT WE FOUND...

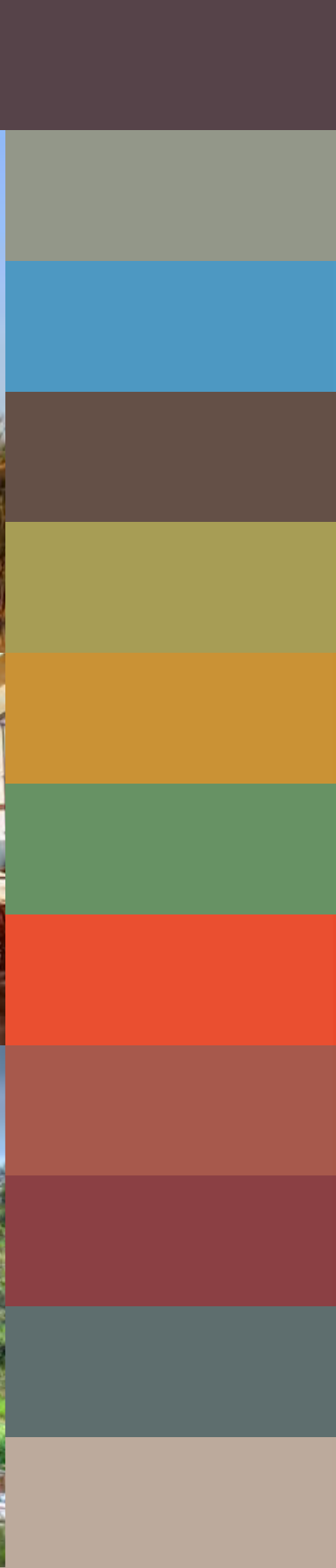
ART & ARTISTS

- Sculptor Patrick Dougherty and his series of large sculptures around the world using sticks, documentary reference *Bending Sticks*
- Metropolitan Museum of Art – The Plains Indians: Artists of Earth and Sky
- Heard Museum – Time Exposures: Picturing a History of the Isleta Pueblo in the 19th Century
- National Cowboy & Western Heritage Museum:
 - Madonnas of the Prairie – Depictions of Women in the American West
 - Coyote Songs – Desperado Dreams: The Art of Robby McMurtry
- Laura Ingalls Wilder Historic Home & Museum
- Mint Museum Uptown – Connecting the World: The Panama Canal at 100

DESIGN RATIONALE

For those with a gypsy spirit and the magic of the desert in their hearts, the retro gentleman, the hipster.

Primitive and wild. Seeking today's farm and inn offering simple and authentic respite.



DESIGN CHECK LIST

- Traveler's lounge — elements from safaris, road trips, hikes, spiritual escapes, and other adventures
- Lodge and ranch style
- Salvage addict with some collections such as brown apothecary bottles, black & white photographs, flask collections and barnyard remnants
- A station garage vibe — metal objects, wood carved trunks, masculine accessories
- DIY rough minimalist — low key décor with ultra-functional aesthetics



DESIGN CHECK LIST

- Aromas of strong coffee, cardamom, paprika, desert rose and jasmine
- Quasi-minimalist styling
- Gardens function as food source and décor, from urban planters to galvanized containers, recycled materials, country and farm feel
- Rehabilitated spaces with farmhouse kitchens
- Artwork inspired by natural oasis scenes, wild mustangs and other animal inspiration, sunsets, cactus, Mexican-inspired embroidery, worn stenciled lettering



DESIGN CHECK LIST

PATTERNS

- Deconstructed geometry such as mineral and quartz
- Gaucho and Navajo designs as well as patterns specific to family heritage, tribal lands and influences of Latin and South America
- Burnt-out fabrics, rusted, charred
- Historic maps of the American West with old territories marked
- Canyon scarring and watermarks



DESIGN CHECK LIST

MATERIALS

- Sustainable, honest materials: wood, leather, slate, iron, steel, rope, dirt, paper, stone, cement, glass, brick, adobe, haystacks, felt, canvas, burlap, wool, mohair, woven, mudcloth, hide, linen, hemp, wheat, raw chambray
- Herbal soaps, beeswax, honey
- Enamel milk glass
- Laminate in light wood looks





BACK AT THE RANCH

COLOR PALETTE

Back at the Ranch offers home to masculine and earthy naturals. Farmstead born, sundrenched and weathered.

Colors range from autumnal blues to cinnamon and chai, gray sky to stardust.

Bright spots of marigold highlight henna and clay.



Purple Prose DET405

Smoke & Ash DET514

Mountain Bluebird DET573

Mayan Chocolate DET693

Organic Matter DE5509

Alameda Ochre DET482

Arizona Tree Frog DET521

Burning Tomato DEA111

Santa Fe Sunset DET458

Barn Red DET424

Brooding Storm DET604

Stanford Stone DET696



MIDNIGHT AT BAR DO COPA





MIDNIGHT AT BAR DO COPA

Inspired by the globetrotting gypsy, the explorers' clubs, the glamorous, eccentric and electric, Midnight at Bar do Copa offers an updated mix of 1980s decadence and opulence with interplays of travels and street scenes. The life of a Maharaja.



The next chapter to 2015's Kaleidoscope, entry into Bar do Copa opens with dreams of color, upbeat tempos and mystic paradise. A walk through the Montevideo market, hearing the beats of the street scenes in Rio,



MIDNIGHT AT BAR DO COPA

a caravan ride to mists of the jungle. Arrival by elephant, bus, steam train, camel, rickshaw, donkey cart or the latest flashy status symbol. To the gypsy, the showman, the adventurer and nomad... admittance for one into Bar do Copa.



WHAT WE FOUND...

NOTABLE EVENTS, PEOPLE AND TRENDS

- Rio de Janeiro, Brazil hosts the 2016 Summer Olympics
- Maharajas' Express – luxury, exotic train ride excursions. Ride in opulence through northern India and rediscover a bygone era
- The passionate and explosive relationship of artists Frida Kahlo and Diego Rivera
- The renewed diplomatic relationship of Cuba and U.S.
- Eva Perón, legendary second wife of Argentine President Juan Perón
- Festa Junina, annual celebration of the Brazilian harvest
- Annual Day of the Dead festival in Mexico
- Renowned design stylist Sibella Court

Frida Kahlo, *Self-Portrait with Thorn Necklace and Hummingbird*, Nickolas Muray Collection, Harry Ransom Center, University of Texas at Austin.



WHAT WE FOUND...

FASHION

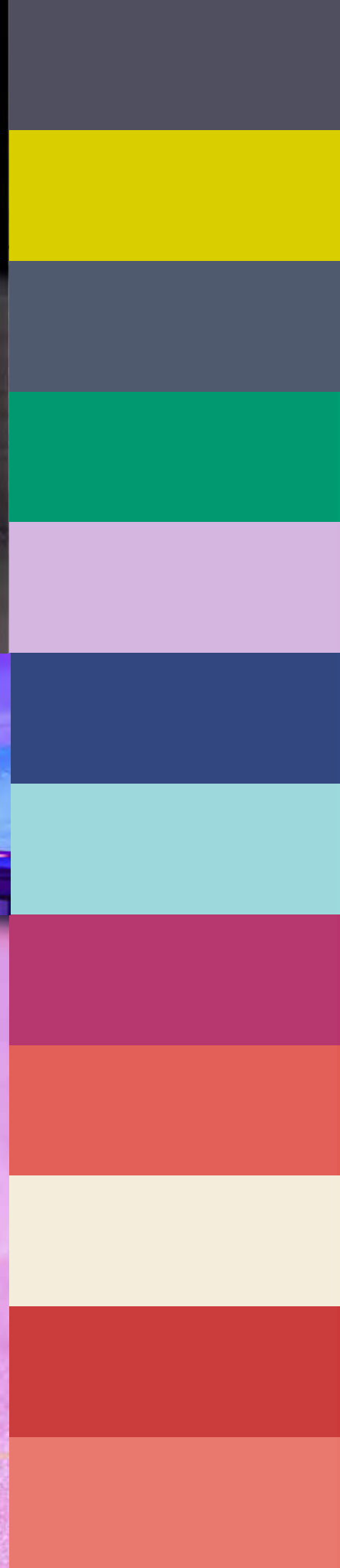
- Artsy, colorful, confident and innovative
- Color elevated through special effects and textures, a color merge of brights and blends

NOTES FROM THE RUNWAYS

- Couture color brights
- Fabrics are reflective, iridescent, and in technical color blends
- '80s updates with crazy furs, lurex, lamé, molten metals
- Sheer knits with pearlized yarns, shimmery wools, luxe designs in jewel colors such as electric blue velvets or rich purple silks

FASHION F/W 15-16 HIGHLIGHTS

- Viktor & Rolf in a collaboration with Vlisco, the colors reflected their Flower Bomb fragrances



WHAT WE FOUND...

ART & ENTERTAINMENT

- Metropolitan Museum of Art – Epic Mbembe Art.
- Photographer Claire Rosen “Birds of a Feather” series

MOVIES & TELEVISION

2015 – 2016 RELEASES

- *A Most Violent Year*
- *Woman in Gold*
- *The Walk*
- *The Second Best Exotic Marigold Hotel*
- *Zoolander 2*
- *Jungle Book*

THEATER

- Historic, notable female circus performers including Maria Speltirini, tightrope walker; Katie Sandwina, woman of steel; Zazel, the first human cannonball; and Annie Oakley, trick shooter



WHAT WE FOUND...

ARCHITECTURE & DESIGN

- The vibrant beach scenes at Ipanema and Copacabana beaches, Brazil
- White domed structures by Oscar Niemeyer at the Caminho Niemeyer in Niterói, Brazil
- Niemeyer's Teatro Popular, with its undulating roof, in Niterói.
- Niemeyer's Niterói Contemporary Art Museum, Museu de Arte Contemporânea de Niterói (known as MAC), emerges from a water basin on the cliffside of Guanabara Bay
- Parque Lage, a public park located at the foot of Corcovado Mountain, includes English gardens, walking trails, and an Eclectic-style mansion
- Sketch, a London restaurant, designed by India Madhavi
- Hotel Vernet, Paris, designed by Francois Champsaur



DESIGN RATIONALE

For those with vibrant, over-the-top personas who have a deep, abiding passion for color, life and vivid design.

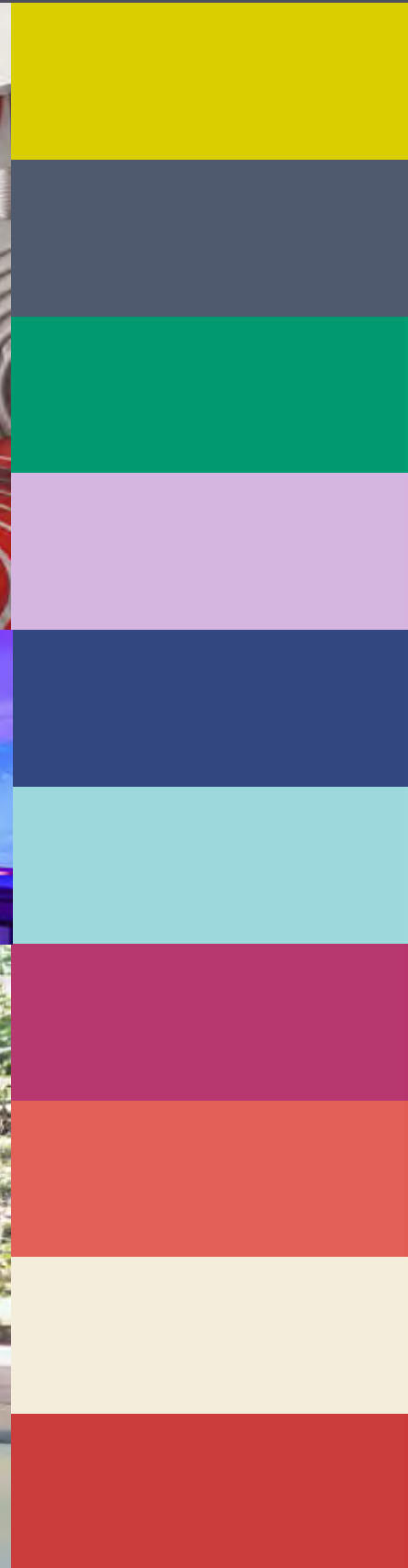
Creative, eccentric, glamorous, and opulent. The daring, the self-confident.

A private cabaret for VIP treatment.



DESIGN CHECK LIST

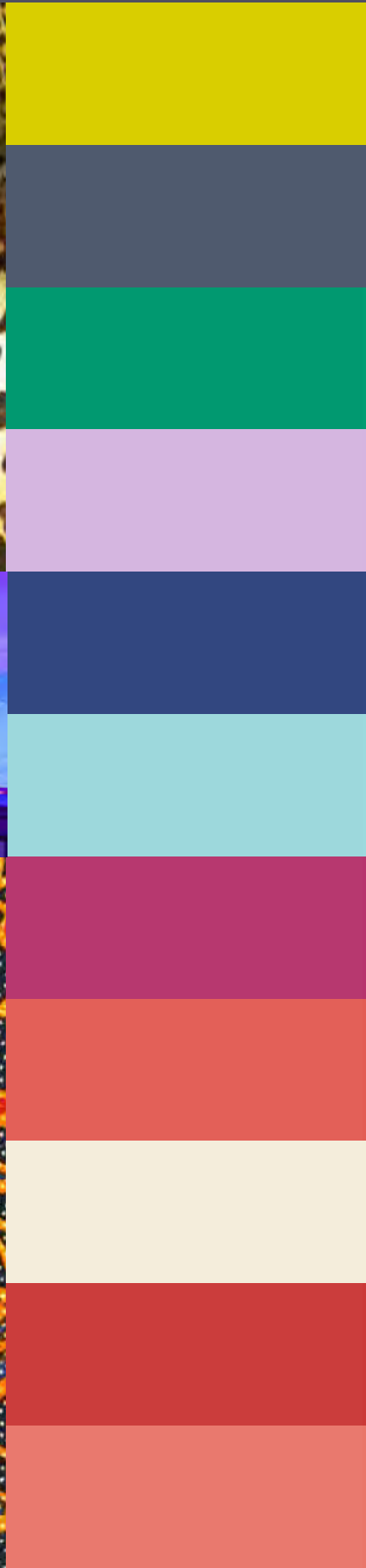
- The artist as decorator
- Baroque and eccentric, with pops of bling and opulence of Art Deco
- '80s Memphis pop meets '70s disco and the hippest lounge around
- The vibrant gardens overflowing with nasturtium, geranium, marigold, poinsettia, hibiscus, orchid, salvia, bougainvillea, sunflower, yucca, zinnia, fuchsia, dahlia, and birds of paradise along with plants and flowers gathered along the travels
- Creating intense theatrics with extravagant, over-the-top statement accessories such as floorstand candlesticks



DESIGN CHECK LIST

PATTERNS

- Street style — interpretive camouflage, irregular shapes, cartoon pop, '80s throwback with Memphis design shapes, decoupage and painter's splashes, neon accents
- Exotic prints — aboriginal dots, tribal patterns, batik, animal prints including tigers, giraffes and other safari sightings
- Art Deco and Nouveau influences
- Kimono stripes, marbled, florals, beaded embroidery



DESIGN CHECK LIST

MATERIALS

- Cotton
- Viscose
- Silk
- Metallic fringe
- Gold accents
- Colored fur
- Lamé
- Plastic overlays
- Gleaming velvet
- Crushed velvet



COLOR PALETTE

The rich color palette evokes memories of travels to food and spice markets — lime, chili, coriander, melon, papaya, lemon.



Night Night DE5937

Chartreuse DEA123

Midnight Sun DET580

Rain Forest DE5684

Pretty Petunia DE5989

MIDNIGHT AT BAR DO COPA

Picking up textiles along the way with saturated, deep coloring, mixed with flashes of exotics and neon brights. The secondary spectrum on the color wheel with iridescence, luminosity and rock candy coloring. The '80s mash with '20s with a revived stage presence.



Indigo Night DEA138

Lake Reflection DET556

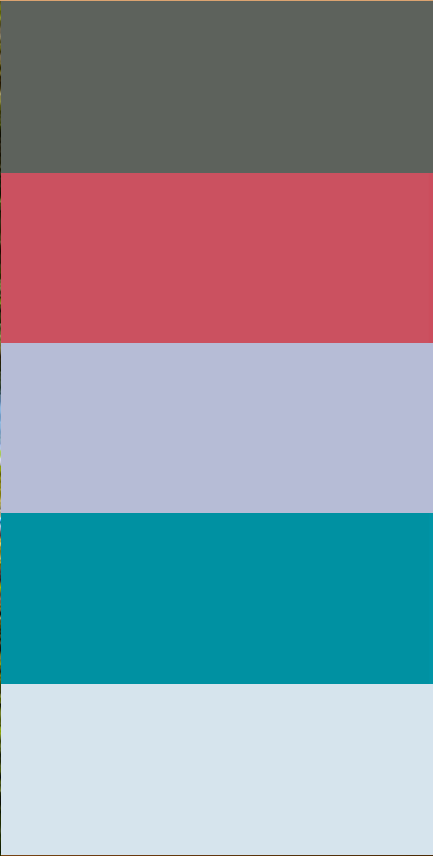
Fiery Fuchsia DEA101

Fiery Coral DET426

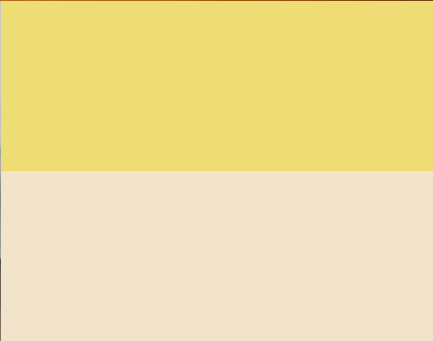
White Blossom DET677

Heart Throb DET412

Pueblo Rose DET438



SUMMER CAMP





Inspired by summers past spent away at camp, enjoying 1950s camp spirit with friends; family vacations spent at the lake or ocean; camping, swimming and hanging with friends, carefree and happy; a vintage, quaint window of times past.

SUMMER CAMP





The next chapter to L.A. Eccentricities. A spirit-lifting story with retro-filled design, festive atmosphere and a vacation mentality. Home away from home. Favorite pasttimes with friends and family creating memories to last a lifetime. Welcome to Summer Camp.

SUMMER CAMP



WHAT WE FOUND...

NOTABLE EVENTS, PEOPLE AND TRENDS

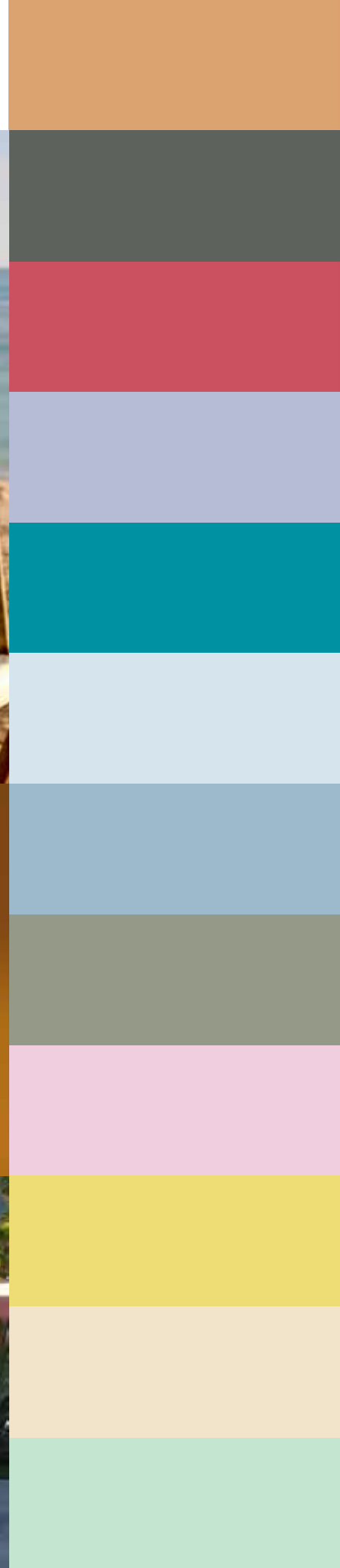
- Camping spirit uptrending from hip city dwellers, to hippies and surfers, the great outdoors calls
- National Park Service celebrating 100 years of service Aug 25, 2016 – showing ways for Americans to embrace the country's 401 national parks
- Family travel – road trips are trending again, and favorite destinations are the typical top resorts such as Disneyland, as well as active adventure trips and historical treks
- A new athleisure segment emerging in fashion, combining fashion, athletics and leisure
- Crayola NY partnering with Bloomingdale's and fashion designers to create life-size garments made out of Crayola crayons



WHAT WE FOUND...

NOTABLE EVENTS, PEOPLE AND TRENDS

- Huntington Beach, CA, the center of surfing culture, celebrated 100 years of surfing in 2014
- Disneyland diamond anniversary celebration spring 2015; grand opening July 17, 1955
- Euro 2016 to be held in France
- Celebration of the 100th birthday of Frank Sinatra in 2015
- Annual Modernism Week in Palm Springs, CA



WHAT WE FOUND...

ARTS & ENTERTAINMENT

- Getty Center – In Focus: Play
- The Strong, National Museum of Play, Rochester, NY – Trivial Pursuit: A 50-State Adventure
- The Field Museum – The Crown Family PlayLab
- Portland Childrens Museum – Circus Zirkus
- Ohio History Center – 1950s: Building the American Dream
- Palais Galliera – Ville de Paris – The 50s: Fashion in France 1947-1957
- Museum of Vancouver – From Rationing to Ravishing: The Transformation of Women’s Clothing in the 1940s and 1950s
- Huntington Beach International Surfing Museum – 100 Years of Surfing, 2014



WHAT WE FOUND...

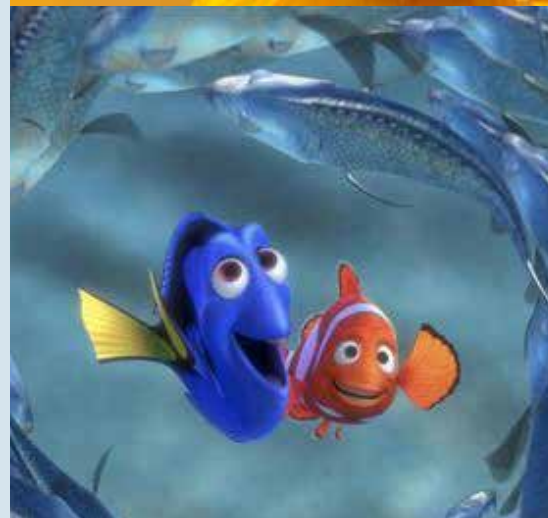
TELEVISION & MOVIES

CLASSICS

- *Swiss Family Robinson*
- *Happy Days*
- *National Lampoon's Family Vacation*
- *Leave It to Beaver*
- *The Parent Trap*
- *American Bandstand*
- *Meatballs*
- *I Love Lucy*
- *The Mickey Mouse Club*
- *Moonrise Kingdom*
- *Stand by Me*

2015 – 2016 RELEASES

- *The Lego Movie*
- *Vacation*
- *Love & Mercy*
- *Finding Dory*
- *Toy Story 4*



WHAT WE FOUND...

THEATER

- *Bye Bye Birdie*
- *Grease*
- *West Side Story*
- *The Pajama Game*

FASHION

NOTES FROM THE RUNWAY

- Pastels rule with several design houses, including Prada
- New athleisure segment takes hold
- Bright hues including sunny marigold



WHAT WE FOUND...

ARCHITECTURE & DESIGN

- Treehouse design trending:
 - Treehotel by Tham & Videgard Hansson Arkitekter
 - The Roost Treehouse by Anthony Gibbon
- Googie architecture of the 1950s, a fight for preservation of this iconic, futuristic '50s style born in Southern California
 - LA Conservancy rallies to save Norm's Diner on La Cienega, Los Angeles, CA
 - Pann's Restaurant Los Angeles, CA
- Egg Shop – restaurant in NYC Nolita neighborhood
- Dutch designer Marcel Ossendrijver
- Rutabaga – Restaurant in Brussels
- Trend Jury Café – Melbourne, Australia
- Lapin Blanc – Hotel in Paris
- Fine Food Restaurant & Coffee Shop – Stockholm, Sweden



DESIGN RATIONALE

For those with a love of retro design, a day filled with dreams and playtime and a vivacious love of life.

A warm version of daily life, cozy design, softened retro, embellished basics.



DESIGN CHECK LIST

- Bohemian camping spirit – U.S. to Euro influence
- The atmosphere of family vacations with stops at motels on Route 66, taking note of historic road signs
- Modernist villas with Scandinavian design influence, summer meadows
- Maps with rivers and trails plotted, color-coded
- Picnic set-ups with folding picnic tables, slatted chairs, gourmand
- Surfside open-air ambiance with parasols, maritime accessories, beach carts



DESIGN CHECK LIST

- Lakeside camp set-up with houseboat, dock and lodge in retro '50s and '60s design
- Make-shift city day camp at the local park for hip city dwellers – picnic snacks picked from the roof-top garden
- Retro influence with floral and rick-rack, felt toys, shaker chairs, formica, crochet potholders, embroidery, doilies, colored glass, items from grandma's attic



DESIGN CHECK LIST

PATTERNS

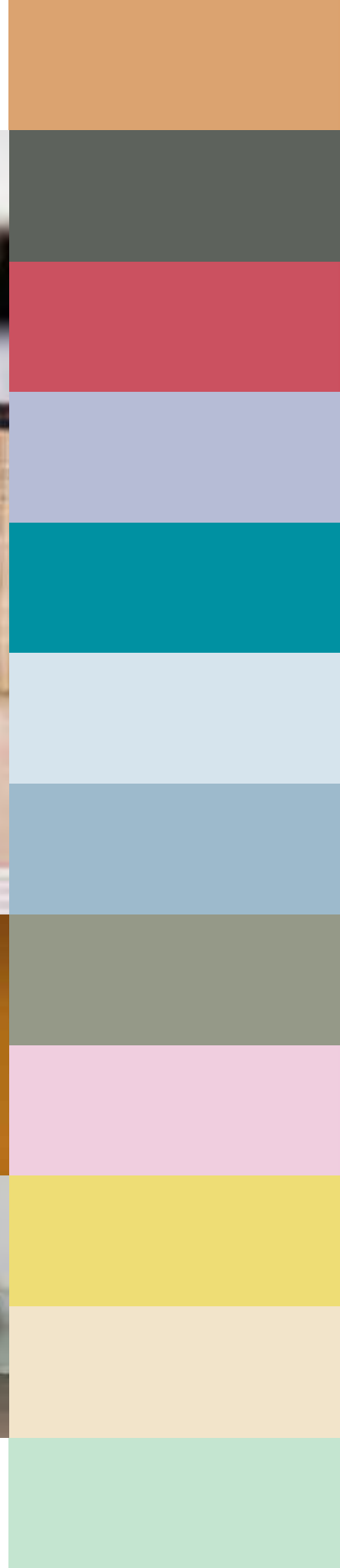
- Artist workshop finds – brush strokes, carefree watercolors, home-made crafts, tie-dye, DIY paper projects, dipped color objects
- Seasonal fruit and flowers
- Vintage '50s and '60s summer camp patterns
- Scandinavian floral and check prints
- A sense of humor infused into traditional household products, childlike compositions, geometrics
- Surf and sea influence
- Happy patterns, folk art, cross-stitch, cartoon motifs



DESIGN CHECK LIST

MATERIALS

- Tubular retro outdoor furniture
- Bakelite
- Toy-style design
- Macrame
- Oilcloth, shiny plastics, ceramic and lacquer
- Colorful matte plastics
- Formica, silicone, rubber, hybrid materials
- Color on natural, light woods such as birchwood and color-infused stones



Western Sunrise DET469

COLOR PALETTE

Happy and playful.

Retro sorbet hues reminiscent of family outing and trips, sunny days and relaxing in the sun.

An updated twist on '50s and '60s influences.



Charcoal Briquette DET601

Cherry Hill DE5069

Hazy Sky DE5912

Oasis DET546

Dreamy Blue DE5812

Anchors Away DE5814

California Sagebrush DET513

Minimal Rose DE5015

Lightning Bug DE5465

Champagne Bubbles DET669

SUMMER CAMP



Mint Smoothie DE5667



AN ISLAND TO MYSELF





Inspired by the visionaries and futurists, those with an eye for new ideas and a need for retreats to think of new innovations without distraction.



Digital worlds mesh with spiritual retreats without causing chaos. Minimalism without sterility. Relaxed and happy.

Importance in daily rituals and the small details. A place of meditation.



AN ISLAND TO MYSELF



In 2016, we trend forward into Asia, looking at the digital artwork as an influence on living, interplaying on everyday life without distracting from a full life. Reaching to the extremes of summits and boundaries in search of the next great idea — from Iceland to the Arctic, the South Pacific to India, from galaxies far away to the depths of the soul. To the Visionary, the Lone Wolf, the Folk Hero and the Meditative Artist... your island awaits.

AN ISLAND TO MYSELF



WHAT WE FOUND...

NOTABLE EVENTS, PEOPLE AND TRENDS

- Upcoming Olympics in Japan (2020 Summer Olympics) and South Korea (2018 Winter Olympics)
- A fresh focus on Asia and the South Pacific, diving further into the countries of Indonesia and Bali
- A continued trend of spiritual retreats as people strive to find balance and time away to gain perspective
- Digital advances continue trending, with smart watches, phones, tablets and other devices fueling our need to stay connected
- Space travel continues to explore the great beyond – NASA's planned unmanned flight to Mars with Orion in Dec 2014 and the planned first manned flight aboard Orion in 2020s





WHAT WE FOUND...

NOTABLE EVENTS, PEOPLE AND TRENDS

- Virgin Galactic, the world's first commercial spaceline, will tentatively schedule its first flight in later 2015
- Studies in Greek mythology trending as we look to the skies for possible future habitats
- NASA astronaut Scott Kelly spending one year aboard the International Space Station
- China building the world's largest radio telescope, due to complete in 2016
- The field of robotics advances with drones leading the way. Possibly the launch of Apple iDrone in 2016? Also, advances in nanotechnology for medical sciences solutions and; advanced robotics allowing self-driving cars on the roads with Google leading the way as its auto crosses the U.S. from San Francisco to New York in 2015, gathering data



WHAT WE FOUND...

NOTABLE EVENTS, PEOPLE AND TRENDS

- Justo Gallego Martínez, a former Trappist monk, has dedicated more than 50 years of his life to constructing his own cathedral in the Spanish town of Mejorada del Campo
- A Buddha statue from China was found to conceal a monk who had mummified himself almost a millennia ago. The traveling exhibition from the Drents Museum in Assen, the Netherlands, is on display until mid-May, when it will go to Luxembourg later in 2015
- A new island off Tonga, the coast of Japan, formed by underwater volcano eruptions was discovered early March 2015 after January eruption events, creating a 14-acre island



WHAT WE FOUND...

ARTS & ENTERTAINMENT

- Art Institute of Chicago – Japanese and European Religious Prints
- Getty Center – In Focus: Tokyo
- Tokyo National Museum –
The Rise of Buddhism: Asuka – Nara period
Poems of Bai Juyi
Buddhist Art: Heian – Muromachi period
Zen and Ink Painting: Kamakura – Muromachi period
The Art of Tea Ceremony
The Arts of Daily Life: Azuchi-Momoyama – Edo period
Masterpieces of Buddhist Sculpture from Northern Japan



WHAT WE FOUND...

TELEVISION & MOVIES

- *The Monk* – 2014 Czech documentary depicting the life of Burmese monks in Myanmar
- *Monk with a Camera: The Life and Journey of Nicholas Vreeland*

FASHION

- Jacket shows aura through color. Lauren Bowker, designer of *The Unseen*, a jacket with the eighth sense, made of flexible ceramic, claims to display the wearer's aura
- Bold geometry with saturated indigo, blue or crisp white creates the latest posh minimalist look

DESIGN RATIONALE

For those seeking a minimalist retreat with touches of collections from travels — a place of quiet meditation.

An atypical home with utilitarian rooms; a blend of oriental and Nordic influences with a Moroccan warm spirit and the hardiness of the seascape.



DESIGN CHECK LIST

- Digital world influences form, pattern and function
- Travels to Asia provide subtle accents to minimalist design, including ideas from South Korea, Japan, Indonesia and Bali
- Pared down tradition – Quaker basics blended with Scandinavian and Japanese influences
- Timeless functional objects as artwork such as Japanese mini-brooms
- Bamboo plaiting, inky blues and heavily dyed products
- A sense of purpose and ritual in objects such as tea bowls, enameled ceramic wood stoves, pedestal stools, tatami rugs, enamelware



DESIGN CHECK LIST

PATTERNS

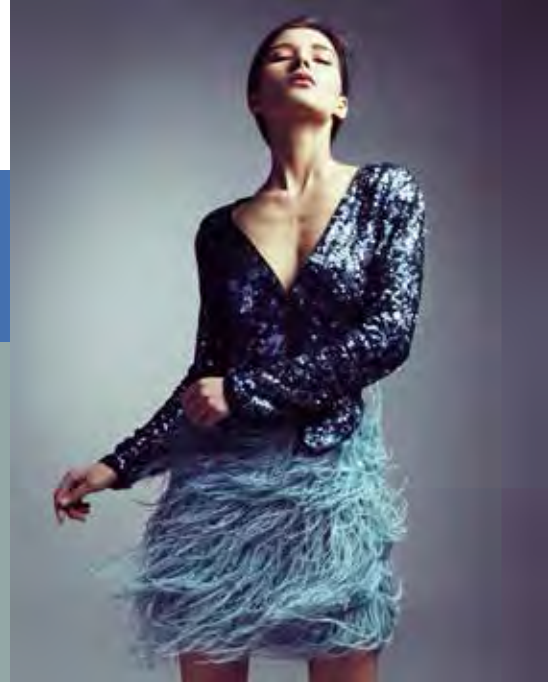
- Icelandic forms and patterns, nature-based extremes
- Otherworldly patterns including Aurora borealis and digital pixelations
- Fabrics play with iridescence, shine, plastic, etched, marled, fluid and inky, matte, crackled patterns
- Linen shirt checks, stripes, chevrons
- Oversized, simplified folk embroideries



DESIGN CHECK LIST

MATERIALS

- Clear resins and plastics that look like weightless capsules
- Technical structures
- Sportswear and activewear fabrics with 3D, elastic, optical effects
- Mesh and weave
- Breezy, fresh, transparent
- Whitened indigo



COLOR PALETTE

A bias towards blue — ranging from crisp and clear, to soft grays and violets, plus taupes, cloud whites and monastery gray.

Ocean blues and sea glass with a spot of earthy Moroccan red sandstone color for grounding.



AN ISLAND TO MYSELF

Pacific Blues DET586

Mythical Blue DEC787

Summer Solstice DET492

Beachcombing DET494

Rosewood DEC706

Eventide DET406

Harbor Mist Gray DET515

Caramelized DET687

Boat Anchor DE6377

Dolphin Tales DET600

Carrara DET649

Morro Bay DET571



2016:

COLOR FORECAST

- COLOR PLAYS BETWEEN DEEP INTENSE COLORS AND SOFT, FEATHERY HUES TO CREATE A WIDE PALETTE TO PLAY WITH FOR 2016.
- QUIET, NATURAL HUES IN MATTE FINISHES SHOWCASE THE BEST OF TIMELESS DESIGN, WHILE SILVER HIGHLIGHTS THE POWDERY EFFECTS. MUTED, HAZY, AMBIGUOUS COLORING.
- MODERN AND INTENSE, DEEP COLORS ENERGIZE AND EMBOLDEN MODERN AND STREET DESIGNS, WHILE NEON SHADES RADIATE LIGHT. EXOTIC, VIBRANT, OVER-THE-TOP. IMPACTFUL.



2016:

COLOR FORECAST

- MINIMALISM EVOKES A QUIET ATMOSPHERE WITH CLEAN WHITES AND DARK SHADES. CLASSIC, MODERN.
- PASTELS TREND FORWARD IN FRESH AND FRUITY COLORING, THOUGH SOPHISTICATED AND GROWN-UP. CASUAL, SUMMERS SPENT SEASIDE WITH RETRO HINTS, UPBEAT AND PLAYFUL.
- PATTERN HIGHLIGHTS INCLUDE RAINBOW COLORING, COLOR BLOCKING, BIRDS OF PARADISE, FLECKED AND SPECKLED COLORING AND AN ABUNDANCE OF FLORALS.



Barn Red DET424

Wine Goblet DET400

Fiery Fuchsia DEA101

Jazz Berry Jam DET401

Rose de Mai DET432



Wine Stain DEA145

Minimal Rose DE5015

Cherry Hill DE5069

REDS AND PINKS

REDS TREND DARKER TOWARD DEEP CONCENTRATES, SOUR CHERRY, BURGUNDY AND BORDEAUX, WHILE PINKS WARM UP AND BLEND WITH SOFT PEACH TONES AND BRIGHT CHERRY LIGHTS UP SUMMERY PALETTES.



Peaches 'n' Cream DET451

Burning Tomato DEA111

Pueblo Rose DET438

Fiery Coral DET426

Western Sunrise DET469

Prairie Sun DET463

Presidio Peach DET435

Pottery Clay DET437



ORANGES

FROM BRIGHTS, TO CORAL TO GRAPEFRUIT,
FROM GINGER TO TANGERINE, A RANGE OF ORANGES
BECOME KEYNOTES TO MANY PALETTES.



Organic Matter DE5509

Chartreuse DEA123

Lightning Bug DE5465

Beachcombing DET494

Summer Solstice DET492



Citrus Spice DE5466

Yellow Stone DE5467

Citron DE5473

YELLOWS

TREND TOWARD GREENISH, AMBER HUES AND ACIDIC YELLOWS, ACCENTS OF JASMINE, SAND AND WHEAT COMPLETE THE RANGE OF YELLOWS.



Lichen Green DET516

Arizona Tree Frog DET521

Rain Forest DE5684



Mint Smoothie DE5667

California Sagebrush DET513



Deco Gray DET609

Meek Moss Green DET606

Drifting Downstream DET605

GREENS

A RANGE OF MISTY AND GRAYISH GREENS PERMEATE AS NEUTRAL BACKDROPS — VAGUE, MINERAL, CLEAN GREENS IN MENTHOL, FOLIAGE, AND CHLOROPHYLL BRIGHTEN UP PALETTES; PINE GREENS, GLASS AND CLUBHOUSE GREENS ADD DEPTH.



Blue Tapestry DET545

Mountain Bluebird DET573

Indigo Night DEA138

Night Night DE5937

Midnight Sun DET580



Oasis DET546

Pacific Blues DET586

Blue Velvet DET559

BLUES

HIGHLIGHTS INCLUDE ULTRA-DEEP BLUES, COBALT, ELECTRIC, PETROL, INKY AND BASIC NAVY. SEA BLUES RANGE FROM PERIWINKLE, TO TURQUOISE AND PEACOCK.



Antique Mauve DE6395

Fallen Rock DE6389

Purple Prose DET405

Pretty Petunia DE5989

Hazy Sky DE5912



Eventide DET406

Rose Mauve DET403

California Dreamin' DET404

PURPLES

MAUVE-TINTED GRAYS, TO ASHEN PINKS, ROSEWOOD, STORMY, LAVENDER, DARK SMOKY PURPLES AND BLACK CURRANT CREATE DRAMA AND KEEP THE PURPLE TRENDS FRESH.



Stanford Stone DET696

Mayan Chocolate DET693

Caramelized DET687

Smoke & Ash DET514

Harbor Mist Gray DET515



Boat Anchor DE6377

Charcoal Briquette DET601

Brooding Storm DET604

Summer Solstice DET492

Champagne Bubbles DET669

White Blossom DET677

Daydreaming DET678

NEUTRALS

WARM NEUTRALS MOVE TO INFUSED BROWNS SUCH AS COFFEE AND CHOCOLATE OR MUTED CAMEL, SEPIA AND FAWN. COOL NEUTRALS TREND TO COLORED GRAYS — BLUISH, GREENISH AND SMOKY. LIGHT NEUTRALS INCLUDE CREAMY NATURALS — BUTTERY AND CREAMY.

2016:





2016: SOURCES & CREDITS

AUTHOR AND RESEARCHER: SARA MCLEAN

PHOTOGRAPHER: BETHANY NAUERT

GRAPHIC DESIGNER: FRED FEHLAU

OTHER IMAGE SOURCES:

- THINKSTOCK
- GETTY IMAGES
- CORBIS IMAGES
- HEIDI YARDLEY
- PATRICK DOUGHERTY

ADDITIONAL CREDITS

TO THE MANOR BORN

Fashion. Dries Van Noten, photo by Photo Boy Kortekaas. **Television and Movies.** Top Right: *Pride and Prejudice and Zombies*. [2016]. ©Cross Creek Pictures. Center Left: *Alice in Wonderland: Through the Looking Glass*. [2016]. ©Walt Disney Pictures. Center Right: *Mr. Holmes*. [2015]. ©See-Saw Films. Bottom: *Far From the Madding Crowd*. [2015]. ©Fox Searchlight Films.

BACK AT THE RANCH

Television and Movies. Top: *The Nomad*. ©The Bats at the Flea Theater. Bottom: *Slow West*. [2015]. ©See-Saw Films. **Architecture & Design.** Top: Alux Caverna Restaurant; Middle: Blue Bottle Café; Bottom Left: Bar at Palacio del Sal; Bottom Right: Baobab Tree Bar. **Arts & Artists.** Top: *Polly Kent Rides West*, 1940. Charles W. Hargens, Jr. Dakota Discovery Museum, Mitchell, SD. Bottom: *Childhood Dreams*, 2007. Patrick Dougherty. Desert Botanical Garden, Phoenix, AZ. Photo: Adam Rodriguez.

MIDNIGHT AT BAR DO COPA

Notable Events, People & Trends. Lower Left: *Frida Kahlo, Self-Portrait with Thorn Necklace and Hummingbird*. Nickolas Muray Collection, Harry Ransom Center, University of Texas at Austin. Lower Right: Maharajas' Express India by IRCTCL. **Movies & Television.** Top: *A Most Violent Year*. [2014]. ©Before the Door Pictures. Bottom: *The Second Best Exotic Marigold Hotel*. [2015]. ©Blueprint Pictures. **Architecture & Design.** Top Left: Hotel Vernet. Top Right: Parque Lage. Photo by Matthew Levine.

SUMMER CAMP

Initial Page: Top Middle: *Moonrise Kingdom*. [2012] ©Indian Paintbrush. **Arts & Entertainment.** Right: Christian Dior, "Bonbon" dress, A/W 1947. Photo: ©Grégoire Alexandre. Ville de Paris. **Television & Movies.** Top: *National Lampoon's Family Vacation*. [1983] ©Warner Bros. Bottom Left: *Finding Dory*. [2016] ©Walt Disney Pictures. Pixar Animation. Bottom Right: *The Lego Movie*. [2014]. ©Warner Bros. **Theater.** Top: *The Pajama Game*. Shaftesbury Theatre production [2014]. Photo ©Tristram Kenton. **Architecture & Design.** Top: Roost Treehouse. ©Anthony Gibbon Design. Top left: Tree Hotel. ©Tham&Videgård Arkitekter. Top Right: Trend Jury Cafe. ©Biasol Design Studio; Right: Norm's Restaurant, photo by Minneart.

AN ISLAND TO MYSELF

Notable Events, People & Trends. Top: Rendering courtesy of NASA. Page 2 Top: NASA. Photo by Bill Ingalls. Page 3 Top Left: Justo Gallego Martínez, photo by J.M. Perez; Top Right: Cathedral of Justo, photo by Zeemanp.

Blue Tapestry DET545	Purple Prose DET405	Night Night DE5937	Western Sunrise DET469	Pacific Blues DET586
S'mores DE6111	Smoke & Ash DET514	Chartreuse DEA123	Charcoal Briquette DET601	Mythical Blue DEC787
Red Clay DET447	Mountain Bluebird DET573	Midnight Sun DET580	Cherry Hill DE5069	Summer Solstice DET492
Peaches 'n' Cream DET451	Mayan Chocolate DET693	Rain Forest DE5684	Hazy Sky DE5912	Beachcombing DET494
Winter Morn DET617	Organic Matter DE5509	Pretty Petunia DE5989	Oasis DET546	Rosewood DEC706
Sonoma Chardonnay DET471	Alameda Ochre DET482	Indigo Night DEA138	Dreamy Blue DE5812	Eventide DET406
Lichen Green DET516	Arizona Tree Frog DET521	Lake Reflection DET556	Anchors Away DE5814	Harbor Mist Gray DET515
Rainsong DET541	Burning Tomato DEA111	Fiery Fuchsia DEA101	California Sagebrush DET513	Caramelized DET687
Daydreaming DET678	Santa Fe Sunset DET458	Fiery Coral DET426	Minimal Rose DE5015	Boat Anchor DE6377
Fallen Rock DE6389	Barn Red DET424	White Blossom DET677	Lightning Bug DE5465	Dolphin Tales DET600
Antique Mauve DE6395	Brooding Storm DET604	Heart Throb DET412	Champagne Bubbles DET669	Carrara DET649
Rose de Mai DET432	Stanford Stone DET696	Pueblo Rose DET438	Mint Smoothie DE5667	Morro Bay DET571